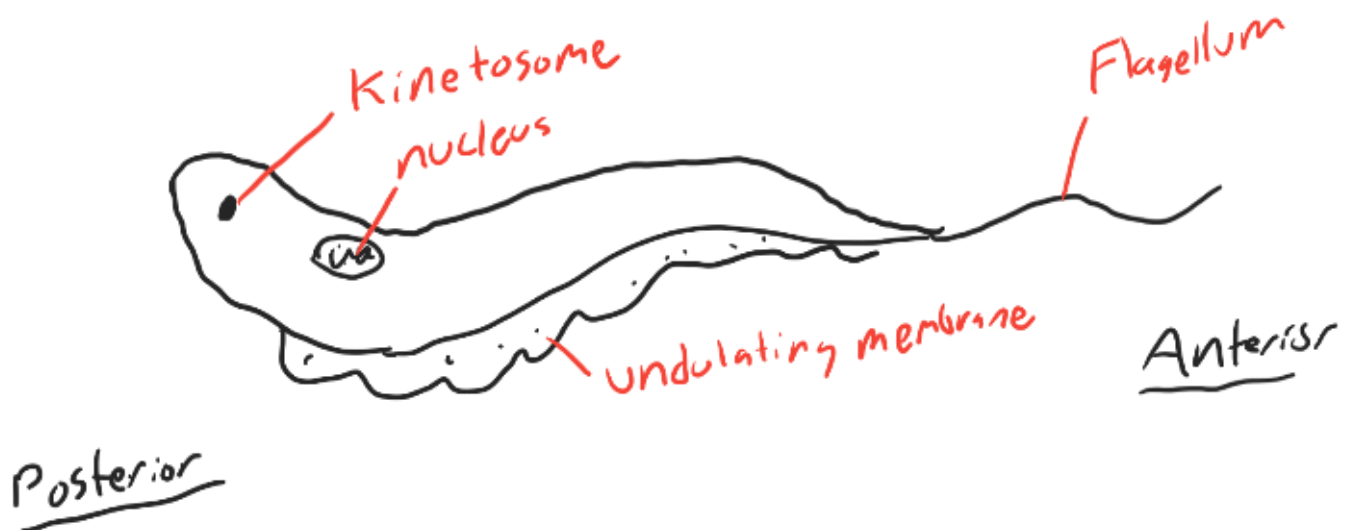


[New website for lecture notes & other materials]

- Protista - single celled, Eukaryotic organisms;
Phylum-level classification; was previously called "Protozoa"
- [C] Kinetoplastida - kinetoplasts = Darkly staining DNA/Chromatin bodies in the organism



- Trypanosomes

^ Trypanosoma brucei brucei
^ T. b. gambiense

Subspecies level

K
P
r

L
O

F - Trypanosomatidae (family group)

G

S

Linnaeus 1758 (authority name; not in italics; who/when)

Ctenomys lessai Gardner et al., 2014

• Trypanosoma b. gambiense :

- Sleeping sickness in Africa
- Glossina palpitans - Distributed across equatorial Africa

- life cycle:

```
graph TD; Humans --> Glossina["Glossina - Tsetse fly (vector)"]; Glossina -- "Amplification in fly ≡ (Binary fission)" --> Humans;
```

- Causes chronic sleeping sickness

• T. b. rhodesiense - Causes acute sleeping sickness

- Mechanical vector: saliva/biting of Glossina

- Stages of disease:

1) Hemolymphatic stage - disease exists in system blood and lymph
Fever, intense itching (Early stages)

2) Late stages - neurological disease - cerebrospinal fluid
lethargy, confusion, coma, death

variable antigen types: difficult for the immune system to defend against due to this

<http://lamarck.unl.edu/Parasitology-unl>